

Police Annual Statistical Tables 2006-2007

Group 1	CENTRAL		CENTRAL		EASTERN		EASTERN		WESTERN		WESTERN		FORCE		FORCE	
Classification of Crimes and Offences	Cases Known	Made	Cases with Persons Traced		Cases Known	Made	Cases with Persons Traced		Cases Known	Made	Cases with Persons Traced		Cases Known	Made	Cases with Persons Traced	
Group 1 – Non Sex Cr. Of Violence or Imp. Violence against the Person	Apr 05- Mar 06	Apr 06- Mar 07	Apr 05- Mar 06	Apr 06- Mar 07	Apr 05- Mar 06	Apr 06- Mar 07	Apr 05- Mar 06	Apr 06- Mar 07	Apr 05- Mar 06	Apr 06- Mar 07	Apr 05- Mar 06	Apr 06- Mar 07	Apr 05- Mar 06	Apr 06- Mar 07	Apr 05- Mar 06	Apr 06- Mar 07
Murder	3	3	3	3	2	0	2	0	0	1	0	1	5	4	5	4
Attempted Murder	41	33	39	28	9	16	9	16	13	18	13	17	63	67	61	61
Culpable Homicide	2	0	2	1	0	0	0	0	0	0	0	0	2	0	2	1
Serious Assault	147	125	123	100	45	51	41	49	55	65	51	57	247	241	215	206
Robbery (incl attempts)	107	134	48	75	7	22	5	16	20	31	14	21	134	187	67	112
Child Cruelty/Neglect	37	36	37	34	19	30	20	30	8	11	8	12	64	77	65	76
Others	37	55	35	49	15	19	13	17	9	12	9	12	61	86	57	78
Table 1	374	386	287	290	97	138	90	128	105	138	95	120	576	662	472	538

It can be seen from the table that there has been a decrease in murder over the previous year. Thankfully these crimes are still very rare in the Tayside area. The number of attempted murders is on a par with the previous year. There has been a marked increase in the number of robbery offences, although the actual numbers are still relatively low overall. The force has responded proactively to the increase in offences, implementing a wide ranging action plan.

Group 2	CENTRAL		CENTRAL		EASTERN		EASTERN		WESTERN		WESTERN		FORCE		FORCE	
Classification of Crimes and Offences	Cases Known	Made	Cases with Persons Traced		Cases Known	Made	Cases with Persons Traced		Cases Known	Made	Cases with Persons Traced		Cases Known	Made	Cases with Persons Traced	
Group 2– Crimes Involving Indecency	Apr 05- Mar 06	Apr 06- Mar 07	Apr 05- Mar 06	Apr 06- Mar 07	Apr 05- Mar 06	Apr 06- Mar 07	Apr 05- Mar 06	Apr 06- Mar 07	Apr 05- Mar 06	Apr 06- Mar 07	Apr 05- Mar 06	Apr 06- Mar 07	Apr 05- Mar 06	Apr 06- Mar 07	Apr 05- Mar 06	Apr 06- Mar 07
Rape	43	30	46	30	22	13	23	19	25	15	24	14	90	58	93	63
Assault with intent to Rape	8	3	8	4	4	1	3	2	4	6	4	6	16	10	15	12
Indecent Assault	68	66	59	58	22	24	18	19	38	35	33	30	128	125	110	107
Lewd and Libidinous Practices	107	77	116	78	29	75	34	106	42	36	45	41	178	188	195	225
Indecent Exposure	19	22	9	12	12	11	12	7	8	10	5	5	39	43	26	24
Others	51	28	52	23	8	15	10	12	13	15	11	20	72	58	73	55
Table 2	296	226	290	205	97	139	100	165	130	117	122	116	523	482	512	486

There have been decreases in most crimes in this group, with the exception of slight increases in lewd and libidinous practices and indecent exposure. This may be due in part to better reporting in these areas. It is of particular note that rape offences are significantly lower than last year.

Group 3	CENTRAL		CENTRAL		EASTERN		EASTERN		WESTERN		WESTERN		FORCE		FORCE	
Classification of Crimes and Offences	Cases Known	Made	Cases with Persons Traced		Cases Known	Made	Cases with Persons Traced		Cases Known	Made	Cases with Persons Traced		Cases Known	Made	Cases with Persons Traced	
Group 3 – Crimes Involving Dishonesty	Apr 05- Mar 06	Apr 06- Mar 07	Apr 05- Mar 06	Apr 06- Mar 07	Apr 05- Mar 06	Apr 06- Mar 07	Apr 05- Mar 06	Apr 06- Mar 07	Apr 05- Mar 06	Apr 06- Mar 07	Apr 05- Mar 06	Apr 06- Mar 07	Apr 05- Mar 06	Apr 06- Mar 07	Apr 05- Mar 06	Apr 06- Mar 07
Th. HB, w.i. & att – Domestic Dwelling	662	724	150	202	110	104	61	56	155	173	55	60	927	1001	266	318
Th. HB, w.i. & att – Domestic Non-Dwelling	219	197	55	37	122	99	53	40	74	65	21	19	415	361	129	96
Th. HB, w.i. & att – Commercial	286	280	74	74	95	131	37	58	150	151	73	64	531	562	184	196
Theft by O.L.P. etc.	342	386	176	222	103	122	60	67	138	244	45	149	583	752	281	738
Theft by O.L.P. to a Motor Vehicle etc.	696	490	100	87	101	83	39	28	141	186	41	64	938	759	180	179
Theft/Att Theft of M.V. (inc TADA)	522	449	189	195	123	128	69	86	181	194	104	123	826	771	362	404
Sec 57/Vagrancy Act etc.	139	126	132	105	34	31	28	31	64	65	55	52	237	222	215	188
Theft	4236	4184	2333	2331	1546	1546	841	851	2066	1984	1032	1038	7848	7714	4206	4220
Theft from Motor Vehicle	245	175	51	21	122	80	49	33	107	140	36	27	474	395	136	81
Reset	63	63	63	61	18	27	18	26	29	16	30	15	110	106	111	102
Embezzlement	11	14	8	11	5	5	3	4	8	4	7	6	24	23	18	21
Fraud	507	506	468	423	167	157	140	109	267	249	220	175	941	912	828	707
Others	129	116	92	56	20	41	13	31	40	60	24	29	189	217	129	116
Table 3	8,057	7,710	3,891	3,825	2,566	2,554	1,411	1,420	3,420	3,531	1,743	1,821	14,043	13,795	7,045	7,066

The number of offences in this category has reduced overall this year. Although the number of theft HB – dwelling offences have risen compared to last year, this is set against a marked decrease in these offences the previous year. Theft OLP has also shown a significant increase over the previous year. It is believed that this type of crime is linked to illegal controlled drugs market and the force is targeting this area of crime as a priority.

Group 4	CENTRAL		CENTRAL		EASTERN		EASTERN		WESTERN		WESTERN		FORCE		FORCE	
Classification of Crimes and Offences	Cases Known	Made	Cases with Persons Traced		Cases Known	Made	Cases with Persons Traced		Cases Known	Made	Cases with Persons Traced		Cases Known	Made	Cases with Persons Traced	
Group 4 – Fireraising, Malicious and Reckless Conduct	Apr 05- Mar 06	Apr 06- Mar 07	Apr 05- Mar 06	Apr 06- Mar 07	Apr 05- Mar 06	Apr 06- Mar 07	Apr 05- Mar 06	Apr 06- Mar 07	Apr 05- Mar 06	Apr 06- Mar 07	Apr 05- Mar 06	Apr 06- Mar 07	Apr 05- Mar 06	Apr 06- Mar 07	Apr 05- Mar 06	Apr 06- Mar 07
Fireraising	137	121	57	51	65	71	36	31	95	68	55	26	297	260	148	108
Malicious Damage/Vandalism	3491	3551	949	906	1784	1831	632	639	2311	1942	775	693	7586	7324	2356	2238
Others	107	135	79	85	55	56	47	50	74	52	55	38	236	243	181	173
Table 4	3,735	3,807	1,085	1,042	1,904	1,958	715	720	2,480	2,062	885	757	8119	7,827	2,685	2,519

Fire raising offences and those of vandalism, which are of a particular concern to the public, have shown a marked decrease this year. There has been a great deal of police and partnership activity to address these problems this year.

Group 5	CENTRAL		CENTRAL		EASTERN		EASTERN		WESTERN		WESTERN		FORCE		FORCE	
Classification of Crimes and Offences	Cases Made Known		Cases with Persons Traced		Cases Made Known		Cases with Persons Traced		Cases Made Known		Cases with Persons Traced		Cases Made Known		Cases with Persons Traced	
Group 5– Other Crimes	Apr 05- Mar 06	Apr 06- Mar 07	Apr 05- Mar 06	Apr 06- Mar 07	Apr 05- Mar 06	Apr 06- Mar 07	Apr 05- Mar 06	Apr 06- Mar 07	Apr 05- Mar 06	Apr 06- Mar 07	Apr 05- Mar 06	Apr 06- Mar 07	Apr 05- Mar 06	Apr 06- Mar 07	Apr 05- Mar 06	Apr 06- Mar 07
Public Mischief/Wasting Police Time	163	178	163	175	80	67	80	67	56	54	66	53	299	299	309	295
Escape and Rescue	23	26	23	23	33	9	33	9	41	52	41	50	97	87	97	82
Resisting Arrest & Obstructing Constable	207	277	210	273	138	131	138	129	213	194	213	187	558	602	561	589
General Attempts to Pervert	83	94	81	90	47	44	47	42	39	65	38	64	169	203	166	196
Sex Offenders	0	1	0	1	0	0	0	0	0	0	0	0	0	1	0	1
Bail – Fail to keep Conditions	832	1085	848	1079	177	302	177	301	317	298	314	297	1326	1685	1339	1677
*Offensive Weapons etc	186	190	184	187	74	72	74	71	75	84	75	83	335	346	333	341
Drugs – Supply, Possession w.i. etc.	297	325	301	284	176	166	178	163	279	289	283	266	752	780	762	713
Drugs – Possession	1275	1107	1277	1071	497	482	494	475	772	723	773	699	2544	2312	2544	2245
Drugs - Others	10	13	10	13	5	10	5	9	12	9	12	8	27	32	27	30
Others	55	87	53	84	10	27	10	26	19	18	19	17	84	132	82	127
Table 5	3,131	3,383	3,150	3,280	1,237	1,310	1,236	1,292	1,823	1,786	1,834	1,724	6191	6,479	6,220	6,296

This category of crime is often an indication of the level of police pro activity. It can be seen that there are marked increases in bail offences and drugs supply. These are two areas where the police have been particularly pro active and successful this year.

Groups 1 – 5 TOTALS	CENTRAL		CENTRAL		EASTERN		EASTERN		WESTERN		WESTERN		FORCE		FORCE	
Classification of Crimes and Offences	Cases Made Known		Cases with Persons Traced		Cases Made Known		Cases with Persons Traced		Cases Made Known		Cases with Persons Traced		Cases Made Known		Cases with Persons Traced	
	Apr 05- Mar 06	Apr 06- Mar 07	Apr 05- Mar 06	Apr 06- Mar 07	Apr 05- Mar 06	Apr 06- Mar 07	Apr 05- Mar 06	Apr 06- Mar 07	Apr 05- Mar 06	Apr 06- Mar 07	Apr 05- Mar 06	Apr 06- Mar 07	Apr 05- Mar 06	Apr 06- Mar 07	Apr 05- Mar 06	Apr 06- Mar 07
Group 1	374	386	287	290	97	138	90	128	105	138	95	120	576	662	472	538
Group 2	296	226	290	205	97	139	100	165	130	117	122	116	523	482	512	486
Group 3	8057	7710	3891	3825	2566	2554	1411	1420	3420	3531	1743	1821	14043	13795	7045	7066
Group 4	3735	3807	1085	1042	1904	1958	715	720	2480	2062	885	757	8119	7827	2685	2519
Group 5	3131	3383	3150	3280	1237	1310	1236	1292	1823	1786	1834	1724	6191	6479	6220	6296
TOTALS	15,593	15,512	8,703	8,642	5,901	6,099	3,552	3,725	7958	7,634	4679	4,538	29,452	29,245	16,934	16,905

Groups 1 to 5: In last year's annual report comment was made on the reduction in numbers of crime recorded and the percentage of crimes recorded when compared to the previous year. 2006/2007 saw a further drop of 0.7% (207 fewer crimes) in the number of crimes recorded. The percentage of crimes detected also improved from 57.5% last year to 57.8% at the end of 2006/2007. These two further improvements are evidence of Tayside Police's continued adherence to the Tayside Policing Style, the National Intelligence Model and Partnership Working through Community Planning.

Complaints Against the Police

<u>Complaints against the police – numbers and disposal</u>	2005/2006	2006/2007
Number of complaint cases received during the year	291	352
Number of complaint cases outstanding from the previous year	52	60
Total number of complaint cases to be processed	343	412
Complaint allegations disposed of during the year as follows:		
Withdrawn by complainer	6	4
Abandoned due to non co-operation of the complainer	8	5
Found to be unsubstantiated	24	2
Resolved by explanation to the complainer	157	239
Reported to the Procurator Fiscal and leading to 'No Proceedings' decision	140	109
Reported to the Procurator Fiscal and leading to criminal proceedings	0	2
Resulting in action in terms of misconduct regulations	2	4
Resulting in Corrective Advice	2	3
Total	339	368
Number of complaint cases outstanding as at 31 st March as follows:		
Reporting to and pending the decision of the Procurator Fiscal	14	19
Still under enquiry by the Investigating Officer	21	12
Pending Court proceedings	1	2
Pending Disciplinary Proceedings	0	3
Otherwise Pending	26	15
Total	62	51

The figure for 2006/07 of 352 sees an increase of 21% from 291 in 2005/06.

Of the 368 allegations disposed of during the year 65% (239) were resolved by explanation to the complainer, 30% (109) were reported to the Area Procurator Fiscal leading to a decision not to instigate criminal proceedings and 0.5% (2) have led to criminal proceedings.

Number of Working Days Lost

	2005/2006		2006/2007	
	Police	Support	Police	Support
Central	5955	1027	6111	716
Eastern	2135	542	2972	558
Western	2967	871	3030	1274
Headquarters	813	5768	636	6299
Total	11870	8208	12749	8847
Percentage	4.5%	5.3%	4.8%	5.5%

The figures show an increase in working days lost for police officers of 879 days compared to 2005/6. This is the first reported increase since 2001 and is due to an increase in the number of short-term absences and a small number of absences of a longer duration.

Support staff absence has increased by 639 days compared with the previous year. This is mainly attributable to an increase in the number of staff with serious long term illnesses within Western and Headquarters divisions. The figure is the third lowest percentage working days lost since 2001.

Authorisation of Officers and Issue of Firearms

As at 31 March 2007	
Number of officers authorised by Chief Constable as firearms users	65
Number of operations against persons known or believed to be armed in which firearms were issued	12
Number of occasions on which firearms were issued for protection purposes	6
Number of persons who received specific armed protection during the year	8
Number of times firearms were issued to destroy crazed animals	1
Number of incidents where firearms were discharged by the police	1

Racist Incident Reports

	Incidents Reported		Number of cases where persons apprehended, reported or warned	
	2005/2006	2006/2007	2005/2006	2006/2007
	Central	242	242	187
Eastern	69	56	64	50
Western	95	79	75	69
Total	406	377	326	294

Breakdown of Types of Incidents

	2005/2006	2006/2007
Abuse/Br. of the Peace	326	315
Vandalism	31	19
Assault	42	37
Others	7	6
Total	406	377

CENTRAL DIVISION

During the year there were 242 racist incidents reported to the police in Dundee, which was the same number as in the previous year. Of these reported incidents, 72.3% resulted in the perpetrator being identified and action taken. This was a reduction on the detection figures of the previous year when 77.3% of reported incidents resulted in action being taken. Whilst this is disappointing, in 20% of the cases which were undetected, a suspect was identified but there was insufficient evidence to support further action.

The trend of previous years continues with the majority of reports relating to verbal abuse, as does reports in relation to country of origin which continue to increase."

EASTERN DIVISION

Eastern Division continue to prioritise racist incidents. This has seen 50 of the 56 reported incidents being detected. There remains a concern that many of the incidents are of a verbally abusive nature committed by people under the influence of alcohol thus presenting a more complex challenge in our efforts to prevent such incidents occurring.

WESTERN DIVISION

During the past year racist incident reporting has shown a decrease of 17% within Western Division with a detection rate of 87%. Racist incidents remain a priority within the Division and are on the agenda at daily and fortnightly tasking meetings. During the year the Divisional Command team hosted meetings with members of the Muslim community and this was very worthwhile and well received. Representatives from the Division play an active role on the Perth and Kinross Racist Incidents Multi-Agency Panel and it is hoped that in the coming year up to 32 schools throughout Division will be able to participate in the Show Racism the Red Card Campaign.

Table of comparisons – Road Collisions and Casualties

	2005/2006	2006/2007	Increase/Decrease	% Change
Central Division – Dundee District				
Total Collisions	1533	1497	-36	-2.3%
Persons Killed	7	1	-6	-85.7%
Persons Seriously Injured	62	77	15	24.2%
Persons Slightly Injured	286	298	12	4.2%
Overall total – Killed and Injured	355	376	21	5.9%
Eastern Division – Angus District				
Total Collisions	1250	1123	-127	-10.2%
Persons Killed	7	14	7	100%
Persons Seriously Injured	75	76	1	1.3%
Persons Slightly Injured	348	281	-67	-19.3%
Overall total – Killed and Injured	430	371	-59	-13.7%
Western Division – Perth & Kinross				
Total Collisions	1697	1799	102	6.0%
Persons Killed	13	19	6	46.2%
Persons Seriously Injured	135	141	6	4.4%
Persons Slightly Injured	401	391	-10	-2.5%
Overall total – Killed and Injured	549	551	2	0.4%
Tayside				
Total Collisions	4480	4419	-61	-1.4%
Persons Killed	27	34	7	25.9%
Persons Seriously Injured	272	294	22	8.1%
Persons Slightly Injured	1035	970	-65	-6.3%
Overall total – Killed and Injured	1334	1298	-36	-2.7%

There has been an overall reduction (1.4%) in the total number of collisions and a reduction (2.7%) in the total number of persons killed and injured from the previous year. However, tragically, 34 persons lost their lives on Tayside roads as compared with 27 persons in the previous year.

Central and Eastern Divisions showed decreases in the number of collisions whereas Western Division showed an increase.

Within Central Division there was a significant reduction in the number of persons killed from the previous year which reflected the experience of preceding years in this urban division. Unfortunately all other casualty classes increased.

Eastern and Western Divisions showed an increase in the number of persons killed.

Eastern Division showed an increase of one additional person seriously injured and a significant reduction in persons slightly injured.

Western Division showed an increase of six additional persons seriously injured and a small reduction in persons slightly injured.

Tayside Police continues to work in close liaison with local authorities and the Scottish Executive to examine and analyse collision history to consider possible engineering solutions.

Education and encouragement along with targeted enforcement activities seek to influence road user behaviour and attitudes, thereby enhancing road safety awareness.

By comparison with previous years, 2006/7 has seen the lowest ever number of collisions (4419) with a slight increase in the number of injury collisions (997) which is the third lowest across the force since 1990. Whilst there has been a very slight increase in the number of persons killed and seriously injured in general terms the force is maintaining the overall trend to achieve the National Targets set for casualty reduction by 2010.

Table of road users killed and injured

	Killed		Injured		Totals	
	2005/2006	2006/2007	2005/2006	2006/2007	2005/2006	2006/2007
Central Division – Dundee District						
Pedestrians	3	1	103	102	106	103
Pedal Cyclists	0	0	21	26	21	26
Motor Cyclists	0	0	20	16	20	16
Motor Cycle Passengers	0	0	0	1	0	1
Drivers	3	0	128	136	131	136
Passengers	1	0	76	94	77	94
Totals	7	1	348	375	355	376
Eastern Division – Angus District						
Pedestrians	1	1	36	43	37	44
Pedal Cyclists	1	0	17	21	18	21
Motor Cyclists	1	1	17	19	18	20
Motor Cycle Passengers	0	1	1	1	1	2
Drivers	3	8	214	171	217	179
Passengers	1	3	138	102	139	105
Totals	7	14	423	357	430	371
Western Division – Perth & Kinross						
Pedestrians	1	3	45	47	46	50
Pedal Cyclists	1	0	19	16	20	16
Motor Cyclists	5	3	47	54	52	57
Motor Cycle Passengers	0	0	9	3	9	3
Drivers	6	7	254	263	260	270
Passengers	0	6	162	149	162	155
Totals	13	19	536	532	549	551
Tayside						
Pedestrians	5	5	184	192	189	197
Pedal Cyclists	2	0	57	63	59	63
Motor Cyclists	6	4	84	89	90	93
Motor Cycle Passengers	0	1	10	5	10	6
Drivers	12	15	596	570	608	585
Passengers	2	9	376	345	378	354
Totals	27	34	1307	1264	1334	1298

Regrettably there have been increases in the number of drivers, passengers and motor cycle passengers killed along with increases in the number of pedestrians pedal cyclists and motor cyclists injured.

Tragically during the year there was a collision in Western Division involving two vehicles which resulted in 5 fatalities and 1 serious injury. Again in Western Division there was a collision involving two vehicles which resulted in 2 fatalities and 2 serious injuries. In Eastern Division there was a collision involving two vehicles which resulted in 2 fatalities and 2 slight injuries.

The number of motor cycle related casualties has remained at approximately the same level however it should be recognised that recreational motor cycling continues to expand and many of the rural roads within the force are extremely popular amongst this fraternity. Educational and enforcement activities are carried out in conjunction with our neighbouring forces to influence rider behaviour and to encourage riders and their passengers to use our roads in safety.

The "Bikesafe" initiative continues to be supported by Tayside Police and the motor cyclists from the Road Policing Unit engage with riders to enhance their overall awareness and hazard perception. Each participant is offered an on road assessment by specialist motor cycle officers with the aim of improving their general riding skills. Every encouragement is given to riders to seek advanced training to further develop their skills.

Tayside Police Road Safety Officers, in conjunction with other personnel, are continuously engaged with local authorities, schools and the National Health Service Tayside to provide education, training and publicity to a wide range of road users.

The strategy for Road Safety Education seeks to deliver life long skills to road users at relevant times. This includes the provision of advice and guidance to new parents regarding child in car safety and the vital importance of having appropriate and correctly fitted child safety restraints. Thereafter a series of educational presentations are delivered as children progress through infancy to secondary school to enhance their awareness and develop safe behaviour as they gain greater independence from their parents and unsupervised access to the roads.

Children's Traffic Club Scotland is the principal resource provided to all pre school educators to assist in the delivery of road safety education. In addition parents receive further information when their children progress from nursery to primary school. There is a continuous high level of participation within the Tayside area.

The Tayside Police Cycle Training Scheme and the "Walkwise" child pedestrian training programme is offered to every Primary School. These programmes provide both classroom theory and practical on-road training for pupils during important stages of their personal development. Every school has copies of the Road Safety Scotland resource "Streetsense" which allows individual teachers to incorporate specific road safety lessons into curriculum projects.

Theatre in Education incorporating road safety messages are offered on a rotational basis to Primary and Secondary Schools. These productions reinforce the various road safety messages the children learn in the classroom and vitally the important role parents have in encouraging safe road behaviour.

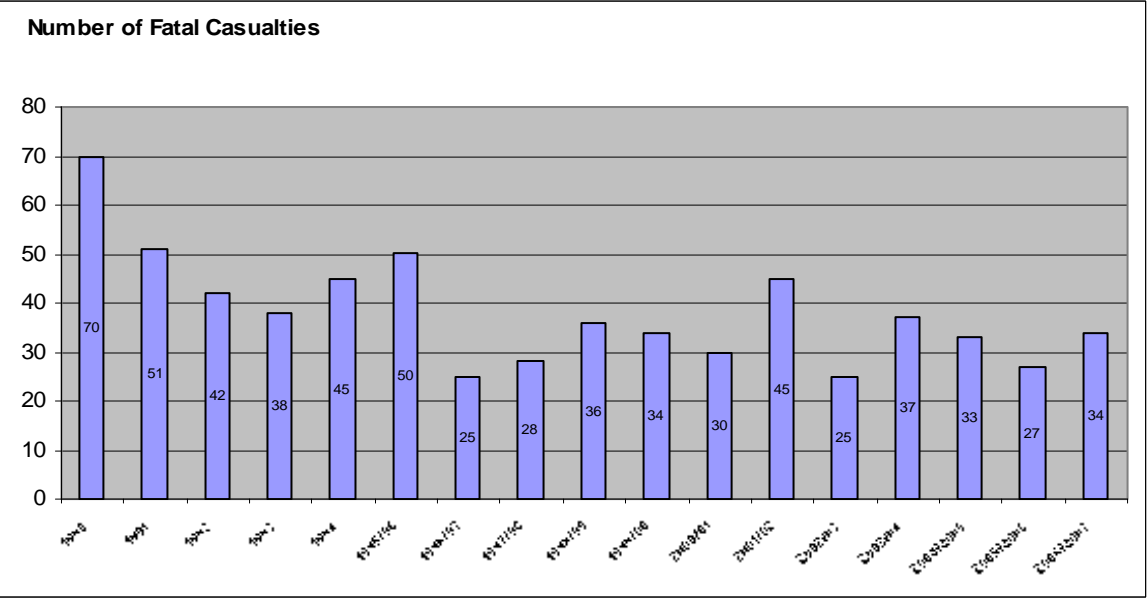
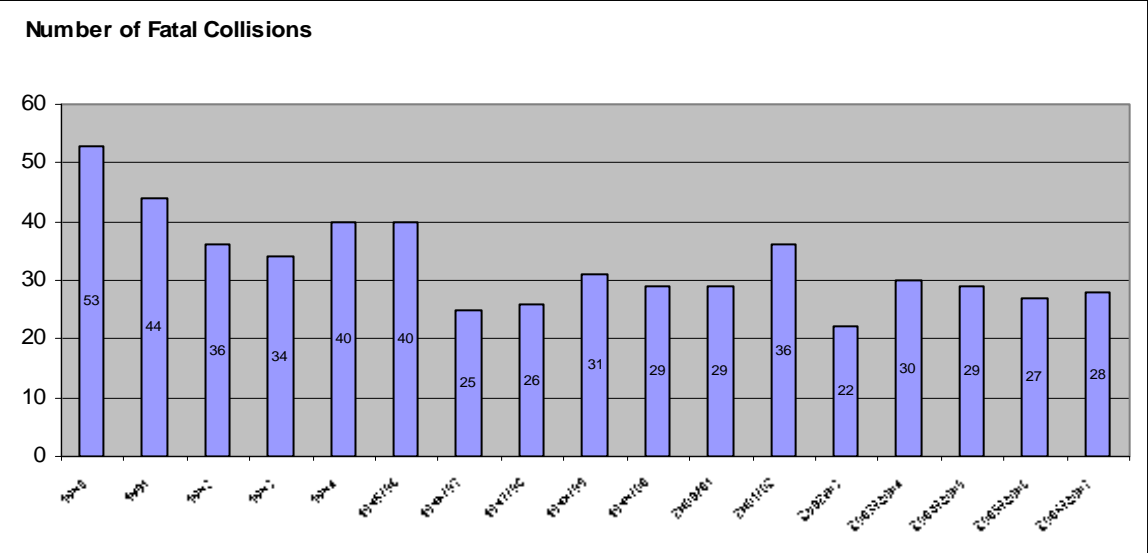
The interactive teaching resource "Crash Magnets" is utilised in Secondary Schools and Colleges. This active learning package is directed at pre/young drivers and is intended to support other road safety initiatives targeting this vulnerable age group by influencing their attitude and behaviour to encourage safe road practices prior to commencing their driving career.

In December 2006 "Safe Drive Stay Alive" was piloted in Dundee. This emotional live theatre presentation which is directed at senior secondary pupils utilises all of the emergency services, road casualty victims and relatives. These people relate their involvement in the aftermath of a collision involving a young person and explain how they cope in dealing with such an unnecessary tragedy. Following on from the success of this event plans are being developed to expand this initiative into both Angus and Perth and Kinross.

Whilst the majority of education targets school age pupils other groups are also catered for. Throughout the year opportunities are taken to offer advice and practical demonstrations to various organisations and age groups and every opportunity is taken to publicise and encourage safe road practices.

Tayside Safety Camera Partnership continues to influence driver behaviour by publicising locations and routes which have an identified collision and speed related history. Educational material is distributed to target groups and intelligence led enforcement activity is carried out by fixed and mobile cameras. Preliminary data indicates that at sites where cameras are used significant road safety benefits have been achieved.

Fatal Collision Pattern ~ 1990 – 2006/2007



Collision Pattern 1990 – 2006/07

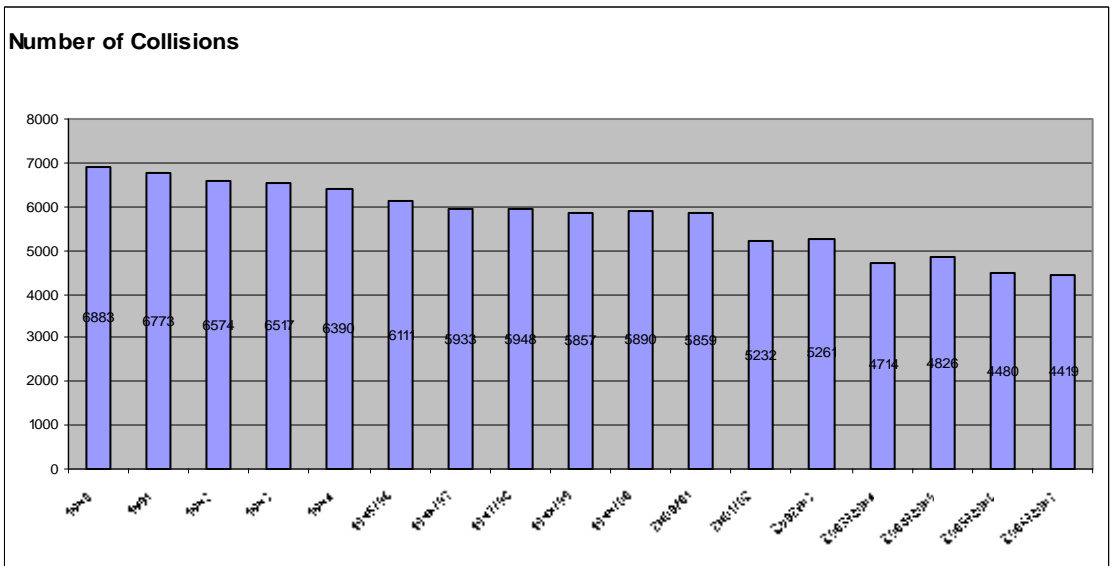
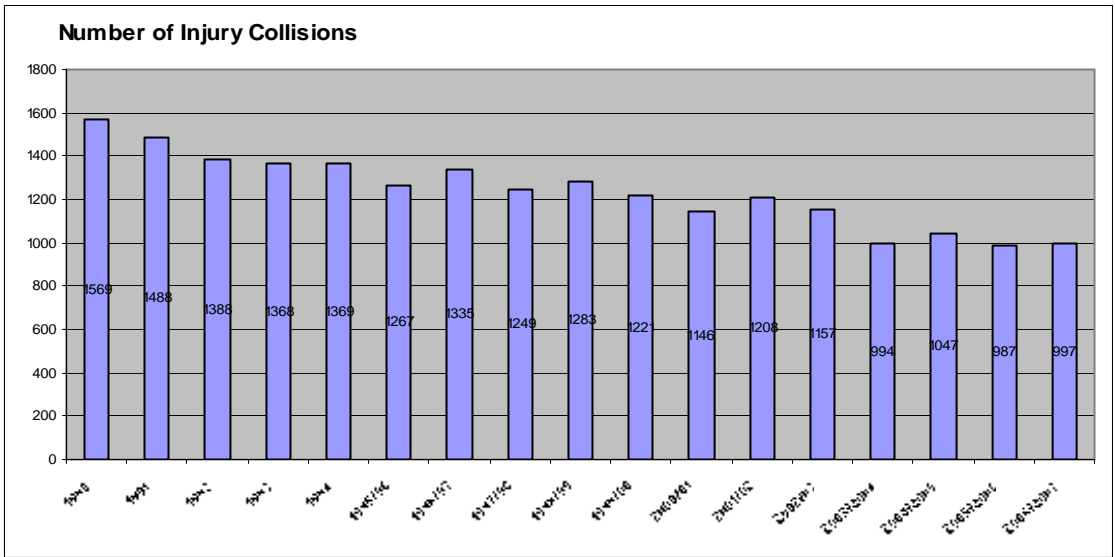


Table of road users killed and injured

	Killed		Injured	
	Under 16	16 and Over	Under 16	16 and Over
Central Division – Dundee District				
Pedestrians	0	1	47	55
Pedal Cyclists	0	0	7	19
Motor Cyclists	0	0	1	15
Motor Cycle Passengers	0	0	1	0
Drivers	0	0	0	136
Passengers	0	0	14	80
Totals	0	1	70	305
Eastern Division – Angus District				
Pedestrians	0	1	24	19
Pedal Cyclists	0	0	11	10
Motor Cyclists	0	1	0	19
Motor Cycle Passengers	0	1	0	1
Drivers	0	8	0	171
Passengers	1	2	21	81
Totals	1	13	56	301
Western Division – Perth & Kinross				
Pedestrians	1	2	16	31
Pedal Cyclists	0	0	3	13
Motor Cyclists	0	3	0	54
Motor Cycle Passengers	0	0	0	3
Drivers	0	7	0	263
Passengers	0	6	21	128
Totals	1	18	40	492
Tayside				
Pedestrians	1	4	87	105
Pedal Cyclists	0	0	21	42
Motor Cyclists	0	4	1	88
Motor Cycle Passengers	0	1	1	4
Drivers	0	15	0	570
Passengers	1	8	56	289
Totals	2	32	166	1098

Misuse of Drugs

Drug	Seizures		Weight		Approx. Value (£)	
	05 – 06	06 – 07	05 – 06	06 – 07	05 – 06	06 – 07
Heroin	380	409	7784	15838.37	1,299,956	2,645,008
Cocaine	191	174	871	12285.93	52,261	737,156
MDMA (Ecstasy)	108	13	10310	34123.5 tabs 18.833g	30,930	102,370 282
LSD	4	9	73	805.52	219	2,417
Psilocybin		NIL		NIL		NIL
Amphetamine						
Powder	107	140	956	56834.62	14,396	568,346
Tablets	5	NIL	6565	NIL	19,686	NIL
Cannabis						
Resin	1294	722	168,563	14728.52	482,089	42,124
Herbal	124	136	692	5714.03	1978	16,342
Plants	26	26	141	1423	24,657	249,025
Pharmaceuticals						
Morphine	7	12	23.1	191	6	31,897
MST	7	2	112	38	3857	190.00
Temazepam	7	10	108	82	108	82.00
Dihydrocodeine	32	41	1136	2066	568	1033
Steroids	Nil	NIL	Nil	NIL	Nil	NIL
Viagra	Nil	3	Nil	83	Nil	664.00
Temgesic	Nil	2	Nil	1	Nil	2.54

Dipipanone	Nil	NIL	Nil	12	Nil	96.00
Diazepam	147	194	61,732	20591.61	61,732	20,592
Nitrazepam	Nil	3	Nil	50	Nil	50.00
Detromoramide	Nil	NIL	Nil	NIL	Nil	NIL
Distigesic	Nil	NIL	Nil	NIL	Nil	NIL
Codeine	Nil	NIL	Nil	3	Nil	1.50
Zopiclone	Nil	NIL	Nil	NIL	Nil	NIL
Unknown	Nil	NIL	Nil	NIL	Nil	NIL
Methadone Linctus		7	409mls	151 mls		30.00
Methadone Tablets						
Total Seizures	2439	1903		Total Value		4,417,708
Detected drugs offences					05-06	3,333
					06-07	2,988

Table of Statutory Performance Indicators

Category	2005/2006 Result	2006/2007 Target	2006/2007 Result	Target Achieved
Crimes (Groups 1 to 5) % cleared up	57.5%	52%	57.8%	YES
Serious Violent Crime ~ crimes made known	682	<i>No Target</i>	718	~
Serious Violent Crime ~ % cleared up	85%	88%	83.8%	NO
Domestic Housebreaking ~ crimes made known	927	<i>No Target</i>	1001	~
Domestic Housebreaking ~ % cleared up	28.7%	30%	31.8%	YES
Drugs: Number of Crimes made known ~ supply, possession with intent etc.04/05 Class A only)	255	260		YES
Racist Crime ~ % cleared up	84.1%	85%	81.4%	NO
Car Crime ~ crimes made known	2238	<i>No Target</i>	1925	~
Car Crime ~ % cleared up	30.3%	29%	34.5%	YES
Roads Policing Unit ~ a) Number of people killed/seriously injured	299	305	328	NO
Roads Policing Unit ~ b) Number of children killed/seriously injured	42	39	36	YES
Roads Policing Unit ~ c) Number of slight casualties	1033	1138	970	YES
Sickness Absence ~ % working time lost - a) Police Officers	4.5%	4.2%	4.8%	NO
Sickness Absence ~ % working time lost - b) Support Staff	5.3%	5%	5.5%	NO
Complaints ~ per 100 Employees	14.3	14	17	NO
999 Calls	90.6%	90%	90.7%	YES
Reports sent to Procurator Fiscal within 28 days	64.9%	75%	72%	NO
Reports sent to The Children's Reporter within 10 days	84.3%	80%	80.7%	YES

CHIEF CONSTABLE'S ANNUAL REPORT

POLICE RANK PROFILE (as at 31 March 2007)

RANK	TOTAL	%	FEMALE	%	MALE	%	TOTAL MINORITY ETHNIC	%	FEMALE MINORITY ETHNIC	%	MALE MINORITY ETHNIC	%
Chief Constable	1	0.09	0	0.00	1	100.00	0	0.00	0	0	0	0.00
Deputy Chief Constable	1	0.09	0	0.00	1	100.00	0	0.00	0	0	0	0.00
Assistant Chief Constable	1	0.09	0	0.00	1	100.00	0	0.00	0	0	0	0.00
Chief Superintendent	5	0.43	2	40.00	3	60.00	0	0.00	0	0	0	0.00
Superintendent	9	0.77	0	0.00	9	100.00	0	0.00	0	0	0	0.00
Chief Inspector	18	1.53	4	22.22	14	77.78	0	0.00	0	0	0	0.00
Inspector	54	4.60	6	11.11	48	88.89	0	0.00	0	0	0	0.00
Sergeant	160	13.63	16	10.00	144	90.00	0	0.00	0	0	0	0.00
Constable	925	78.79	259	28.00	666	72.00	7	0.76	1	0.11	6	0.65
TOTALS	1174	100.00	287	24.45	887	75.55	7	0.60	1	0.09	6	0.51
Promoted Posts	249	100.00	28	11.24	221	88.76	0	0.00	0	0	0	0
Officers working Part-Time	38	100.00	37	97.37	1	2.63	0	0.00	0	0	0	0
Special Constables	173	100.00	56	32.37	117	67.63	5	2.89	1	0.58	4	2.31

COMMENTS:

The above figures, for the purposes of Equal Opportunities monitoring include police officers who are on secondments or career breaks and also include:

- 1 Temporary DCC (Male) & 1 Temporary ACC (Male)
- 1 Temporary Chief Superintendent (Female)
- 1 Temporary Superintendent (Male)
- 2 Temporary Inspectors (Males)
- 7 Temporary Sergeants (2 Females & 5 Males)

Since March 2006, the number of minority ethnic police officers has increased by 2 to 7 (0.6%), with 1 female and 6 male officers. For the purposes of this report, the figure is based upon visible minority ethnic police officers.

Since March 2006, the total number of female officers has increased by 8 to 287 (24.5%), whilst the total number of male officers has decreased by 11 to 887 (75.5%). The number of promoted posts held by women has increased by 4 to 28 (11.2%), whilst the number of promoted posts held by men decreased by 4 to 221 (88.8%).

The total number of police officers who work on a part-time basis within the force is 38 (3.2%).

Since March 2006, the number of minority ethnic special constables has decreased by 1 to 5 (2.9%), with 1 female special constable and 4 male special constables. 2 male special constables joined the force as regular police officers. For the purposes of this report, the figure is based upon visible minority ethnic special constables.

Since March 2006, the total number of special constables has increased by 15 to 173. The total number of female special constables has increased by 6 to 56 (32.4%), whilst the total number of male special constables has increased by 9 to 117 (67.6%).

CHIEF CONSTABLE'S ANNUAL REPORT

SUPPORT STAFF PROFILE (as at 31 March 2007)

GRADE	TOTAL	FEMALE	%	MALE	%	TOTAL MINORITY ETHNIC	%
Chief Officers (CO)	3	1	33.33	2	66.67	0	0.00
Professional (PO)	67	29	43.28	38	56.72	1	1.49
Technical (TE)	77	34	44.16	43	55.84	1	1.30
Administrative (AP)	274	198	72.26	76	27.74	2	0.73
Clerical (GS)	223	149	66.82	74	33.18	2	0.90
Other	82	56	68.29	26	31.71	2	2.44
TOTALS	726	467	64.33	259	35.67	8	1.10

COMMENTS:

Since March 2006, the number of minority ethnic support staff has increased by 2 to 8 (1.1%). For the purposes of this report, the figure is based upon visible minority ethnic support staff.

Since March 2006 the ratio of female and male support staff has seen a 1.2% reduction to 64.3% for female support staff and 1.2% increase to 35.7% male support staff.

A total of 29.5% of support staff work on a job-share or part-time basis. This has increased by 4% since March 2006.

CHIEF CONSTABLE'S ANNUAL REPORT

POLICE PROMOTIONS (April 2006 to March 2007)

RANK	TOTAL	FEMALE	%	MALE	%	TOTAL MINORITY ETHNIC	%	FEMALE MINORITY ETHNIC	%	MALE MINORITY ETHNIC	%
Constable to Sergeant	6	2	33.33	4	66.67	0	0.00	0	0.00	0	0.00
Constable to Temporary Sergeant	7	1	14.29	6	85.71	0	0.00	0	0.00	0	0.00
Temporary Sergeant to Sergeant	0	0	0.00	0	0.00	0	0.00	0	0.00	0	0.00
Sergeant to Inspector	5	1	20.00	4	80.00	0	0.00	0	0.00	0	0.00
Sergeant to Temporary Inspector	2	0	0.00	2	100.00	0	0.00	0	0.00	0	0.00
Temporary Inspector to Inspector	1	0	0.00	1	100.00	0	0.00	0	0.00	0	0.00
Inspector to Chief Inspector	2	0	0.00	2	0.00	0	0.00	0	0.00	0	0.00
Inspector to Temporary Chief Inspector	0	0	0.00	0	0.00	0	0.00	0	0.00	0	0.00
Temporary Chief Inspector to Chief Inspector	1	0	0.00	1	100.00	0	0.00	0	0.00	0	0.00
Chief Inspector to Superintendent	0	0	0.00	0	0.00	0	0.00	0	0.00	0	0.00
Chief Inspector to Temporary Superintendent	2	0	0.00	2	100.00	0	0.00	0	0.00	0	0.00
Temporary Superintendent to Superintendent	2	0	0.00	2	100.00	0	0.00	0	0.00	0	0.00
Superintendent to Chief Superintendent	1	1	100.00	0	0.00	0	0.00	0	0.00	0	0.00
Superintendent to Temporary Chief Superintendent	1	1	100.00	0	0.00	0	0.00	0	0.00	0	0.00
Temporary Chief Superintendent to Chief Superintendent	0	0	0.00	0	0.00	0	0.00	0	0.00	0	0.00
Chief Superintendent to Temporary ACC	1	0	0.00	1	100.00	0	0.00	0	0.00	0	0.00
Chief Superintendent to ACC	0	0	0.00	0	0.00	0	0.00	0	0.00	0	0.00
ACC to Temporary DCC	1	0	0.00	1	100.00	0	0.00	0	0.00	0	0.00
TOTALS	32	6	18.75	26	81.25	0	0.00	0	0.00	0	0.00

COMMENTS:

Between April 2006 and March 2007, 32 police officers were promoted, 6 female officers (18.8%) and 26 male officers (81.2%). Of the police officers promoted 14 (43.8%) were on a temporary basis (2 females, 12 males).

There were no minority ethnic officers who were eligible to apply for promotion during this period. For the purposes of this report, the figure is based upon visible minority ethnic police officers.

Officers who are interested in promotion and who meet the criteria, must make a formal application and go through an assessment process to check competence for the next rank.

CHIEF CONSTABLE'S ANNUAL REPORT

SUPPORT STAFF PROMOTIONS (April 2006 to March 2007)

GRADE	TOTAL	FEMALE	%	MALE	%	TOTAL MINORITY ETHNIC	%	FEMALE MINORITY ETHNIC	%	MALE MINORITY ETHNIC	%
Chief Officers Grades											
	0	0	0.00	0	0.00	0	0.00	0	0.00	0	0.00
Sub-Total	0	0	0.00	0	0.00	0	0.00	0	0.00	0	0.00
PO Grades											
Temporary PO5	1	0	0.00	1	100.00	0	0.00	0	0.00	0	0.00
P04	1	1	100.00	0	0.00	0	0.00	0	0.00	0	0.00
PO3	1	0	0.00	1	100.00	0	0.00	0	0.00	0	0.00
Temporary PO2	1	0	0.00	1	100.00	0	0.00	0	0.00	0	0.00
PO1	1	0	0.00	1	100.00	0	0.00	0	0.00	0	0.00
Sub-Total	5	1	20.00	4	80.00	0	0.00	0	0.00	0	0.00
TE Grades											
TE2-TE3	1	0	0.00	1	100.00	0	0.00	0	0.00	0	0.00
TE1-4	1	0	0.00	1	100.00	0	0.00	0	0.00	0	0.00
Sub-Total	2	0	0.00	2	100.00	0	0.00	0	0.00	0	0.00
AP Grades											
AP3-AP4	1	1	100.00	0	0.00	0	0.00	0	0.00	0	0.00
Temporary AP3-AP4	1	1	100.00	0	0.00	0	0.00	0	0.00	0	0.00
AP3	1	1	100.00	0	0.00	0	0.00	0	0.00	0	0.00
Temporary GS1-AP4	1	1	100.00	0	0.00	0	0.00	0	0.00	0	0.00
AP2	2	2	100.00	0	0.00	0	0.00	0	0.00	0	0.00
Temporary AP2	1	0	0.00	1	100.00	0	0.00	0	0.00	0	0.00
AP1-AP2	1	1	100.00	0	0.00	0	0.00	0	0.00	0	0.00
AP1	5	4	80.00	1	20.00	0	0.00	0	0.00	0	0.00
Temporary AP1	1	1	100.00	0	0.00	0	0.00	0	0.00	0	0.00
Sub-Total	14	12	85.71	2	14.29	0	0.00	0	0.00	0	0.00
GS Grades											
	0	0	0.00	0	0.00	0	0.00	0	0.00	0	0.00
Sub-Total	0	0	0.00	0	0.00	0	0.00	0	0.00	0	0.00
TOTALS	21	13	61.90	8	38.10	0	0.00	0	0.00	0	0.00

COMMENTS:

Between April 2006 and March 2007, 21 Support Staff were promoted, 13 females and 8 males. 28.6% of those promoted during this period, were promoted on a temporary basis.

There were no minority ethnic support staff promoted into higher graded posts during this period. For the purposes of this report, the figure is based upon visible minority ethnic support staff.

Support Staff can apply for a higher graded advertised post within the organisation. This involves going through the same recruitment and selection process as any other applicant who does not currently work for Tayside Police.

CHIEF CONSTABLE'S ANNUAL REPORT

POLICE OFFICER LEAVERS (April 2006 to March 2007)

REASON FOR LEAVING	TOTAL	FEMALE	%	MALE	%	FEMALE MINORITY ETHNIC	%	MALE MINORITY ETHNIC	%
DEATH IN SERVICE	1	0	0.00	1	0.00	0	0.00	0	0.00
DISMISSALS	0	0	0.00	0	0.00	0	0.00	0	0.00
RESIGNATIONS	16	5	31.25	11	68.75	0	0.00	0	0.00
RETIRALS	28	2	7.14	26	92.86	0	0.00	0	0.00
TRANSFERS	2	0	0.00	2	100.00	0	0.00	0	0.00
TOTALS	47	7	14.89	40	85.11	0	0.00	0	0.00

SUPPORT STAFF LEAVERS (April 2006 to March 2007)

REASON FOR LEAVING	TOTAL	FEMALE	%	MALE	%	FEMALE MINORITY ETHNIC	%	MALE MINORITY ETHNIC	%
DISMISSALS	2	2	100.00	0	0.00	0	0.00	0	0.00
END OF TEMPORARY CONTRACT	5	4	80.00	1	20.00	0	0.00	0	0.00
RESIGNATIONS	34	25	73.53	9	26.47	0	0.00	1	2.94
RETIRALS	16	10	62.50	6	37.50	0	0.00	0	0.00
TRANSFERS	1	1	100.00	0	0.00	0	0.00	0	0.00
OTHER	1	1	100.00	0	0.00	0	0.00	0	0.00
TOTALS	59	43	72.88	16	27.12	0	0.00	1	1.69

SPECIAL CONSTABLE LEAVERS (April 2006 to March 2007)

REASON FOR LEAVING	TOTAL	FEMALE	%	MALE	%	FEMALE MINORITY ETHNIC	%	MALE MINORITY ETHNIC	%
APPOINTED TO REGULARS	8	3	37.50	5	62.50	0	0.00	2	25.00
RESIGNATIONS	15	8	53.33	7	46.67	0	0.00	0	0.00
TRANSFERS	2	1	50.00	1	50.00	0	0.00	0	0.00
TOTALS	25	12	48.00	13	52.00	0	0.00	2	8.00

COMMENTS:

Between April 2006 to March 2007, a total of 47 police officers left the force (7 females, 40 males).

Between April 2006 to March 2007, a total of 59 support staff left the force (43 females, 16 males). 1 minority ethnic male resigned from the force.

Between April 2006 to March 2007, a total of 25 special constables left the force (12 females, 13 males). 2 minority ethnic male Special Constables joined the force as Police Officers during this period.

For the purposes of this report, the minority ethnic figures are based upon visible minority ethnic staff.

CHIEF CONSTABLE'S ANNUAL REPORT

RECRUITMENT (From April 2006 to March 2007)

POLICE OFFICER	TOTAL	FEMALE	%	MALE	%	FEMALE MINORITY ETHNIC	%	MALE MINORITY ETHNIC	%
Application Forms Received	9	3	33.33	6	66.67	0	0.00	1	11.11
Recruited	44	13	29.55	31	70.45	0	0.00	2	4.55

SPECIAL CONSTABLE	TOTAL	FEMALE	%	MALE	%	FEMALE MINORITY ETHNIC	%	MALE MINORITY ETHNIC	%
Application Forms Received	162	64	39.51	98	60.49	1	0.62	10	6.17
Recruited	40	18	45.00	22	55.00	0	0.00	1	2.50

SUPPORT STAFF	TOTAL	FEMALE	%	MALE	%	FEMALE MINORITY ETHNIC	%	MALE MINORITY ETHNIC	%	FEMALE GJIS	%	MALE GJIS	%
Application Forms Received	3588	2247	62.63	1332	37.12	38	1.06	66	1.84	26	0.72	42	1.17
Recruited	105	69	65.71	36	34.29	1	0.95	0	0.00	0.00	0.00	0	0.00

COMMENTS:

Tayside Police is currently implementing the recommendations stemming from the recruitment review which was completed in 2006. In relation to police officer recruitment the recommendations will allow a faster processing of applications whilst ensuring the process itself remains robust and meets the requirements for the post. Already the implementation of better relationship management has begun to bear fruit with four minority ethnic applicants to the Accelerated Promotion Scheme for Graduates compared with none in recent years. Although none were successful all have successfully completed Tayside Police's recruitment process for the Regulars and will be joining during 2007. The impact of the review will also ensure that the level of knowledge of those involved in recruitment will be maintained and increased through the updating of the Recruitment and Selection Guidance and regular updates via the intranet. A Service Level Agreement is also being developed for recruitment to ensure everyone is aware of their responsibilities.

Police Officers

During this period, Tayside Police were not accepting applications as we already had sufficient candidates in the recruitment process. The majority of officers recruited during this reporting period had applied to the Force before April 2006. Although there have been no applications received for police officers during 2006 except for Accelerated Promotion Scheme for Graduates, interest in joining Tayside Police remains extremely high with a great deal of interest being shown at careers events and through contact by telephone or e-mail. Recruitment is set to resume in mid 2007 and it is unlikely that there will be a need for widescale advertising although more targeted advertising towards under-represented groups will take place. The anticipated quicker processing of applications will hopefully alleviate any concerns amongst individual that the process is too long.

9 Accelerated Promotion Scheme for Graduates applications were received from 33.3% females and 66.7% males. 11.1% of these applications received were from minority ethnic applicants. Of those applicants who were successful in joining the force, 29.6% of new recruits during the period April 2006 - March 2007 were female and 4.5% of new recruits were from a minority ethnic background.

COMMENTS:

Special Constables

There has been a significant increase in interest from students during 2006 to become Special Constables. This has been partly from the push by Universities and colleges to get students to undertake voluntary work to assist their CVs and an increased interest in using the Specials as a stepping stone into the regulars. Better contact is therefore being made with the further education establishments to foster this interest. The Special Constabulary is also continuing to prove a valuable tool in gaining interest in the police service from under-represented groups.

162 applications were received from applicants expressing an interest in joining Tayside Police as a Special Constable. 39.5% of applications were from females and 60.5% were from males. 6.8% of applications were received from applicants from minority ethnic backgrounds. Of those applicants who were successful in joining the force, 45% of those joining as a Special Constable during the period April 2005 -March 2006 were female and 2.5% of new Special Constables were from a minority ethnic background.

Support Staff

Of the 3588 applications received between April 2006 and March 2007, 105 individuals were recruited. 1 minority ethnic applicant was recruited during this time. The Recruitment Team are currently looking at ways to increase applications from minority ethnic applicants and applicants with disabilities. Out of the large number of applications received, 9 applicants did not specify their gender and 9 applicants chose not to specify their ethnic origin on the Equal Opportunities Monitoring form.

CHIEF CONSTABLE'S ANNUAL REPORT

POLICE AGE PROFILE (as at 31 March 2007)

AGE GROUP	TOTAL	%	FEMALE	%	MALE	%	TOTAL MINORITY ETHNIC	%
16-24	33	2.81	12	36.36	21	63.64	0	0.00
25-34	376	32.03	146	38.83	230	61.17	4	1.06
35-44	465	39.61	104	22.37	361	77.63	2	0.43
45-54	296	25.21	25	8.45	271	91.55	1	0.34
55-64	4	0.34	0	0.00	4	100.00	0	0.00
65+	0	0.00	0	0.00	0	0.00	0	0.00
TOTALS	1174	100.00	287	24.45	887	75.55	7	0.60

SUPPORT STAFF AGE PROFILE (as at 31 March 2007)

AGE GROUP	TOTAL	%	FEMALE	%	MALE	%	TOTAL MINORITY ETHNIC	%
16-24	32	4.41	25	78.13	7	21.88	2	6.25
25-34	168	23.14	113	67.26	55	32.74	3	1.79
35-44	221	30.44	156	70.59	65	29.41	2	0.90
45-54	191	26.31	124	64.92	67	35.08	1	0.52
55-64	111	15.29	47	42.34	64	57.66	0	0.00
65+	3	0.41	2	66.67	1	33.33	0	0.00
TOTALS	726	100.00	467	64.33	259	35.67	8	1.10

SPECIAL CONSTABLE AGE PROFILE (as at 31 March 2007)

AGE GROUP	TOTAL	%	FEMALE	%	MALE	%	TOTAL MINORITY ETHNIC	%
16-24	47	27.17	20	42.55	27	57.45	3	6.38
25-34	51	29.48	20	39.22	31	60.78	0	0.00
35-44	39	22.54	12	30.77	27	69.23	1	2.56
45-54	25	14.45	4	16.00	21	84.00	1	4.00
55-64	11	6.36	0	0.00	11	100.00	0	0.00
65+	0	0.00	0	0.00	0	0.00	0	0.00
TOTALS	173	100.00	56	32.37	117	67.63	5	2.89